

R-EFS-0804-30-GOM-240

12-Port Outdoor Gigabit Managed Switch PoE+



Accessories

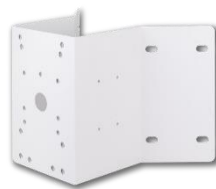
R-PMA



R-RPMA



R-CMA



Technical Specification

PoE Management

Port Configuration	Supports per port PoE configuration function
PoE Scheduling	Supports per port PoE scheduling to turn on/off the PoE devices (PDs).
Auto-checking	Check the link status of PDs. Reboot PDs if there is no responses
Power Delay	The switch provides power to the PDs based on delay time when PoE switch boots up, in order to protect switch from misuse of the PDs.

IP Surveillance Graphical User Interface Specifications

Automatic Discovery	Discover IP cameras complying ONVIF automatically
Topology View	Generate Topology maps to manage IP cameras
Floor view	It's easy to drag and drop PoE devices and help you to build smart workforces
Map view	Enhance efficiency to drag and drop devices and monitor surroundings on google map
Traffic Monitoring	Comprehensive chart to show traffic status
PoE Management	Reboot IP camera, Scheduling PoE on/off, alive checking, Power delay as PoE switch boots up, PoE configuration

Layer 2 Switching Specifications

Spanning Tree Protocol	MAC Bridges Standard Spanning Tree (STP) 802.1d, Rapid Spanning Tree (RSTP) 802.1w, Multiple Spanning Tree (MSTP) 802.1s
IP/Mac Port Trunking	Link Aggregation Control Protocol (LACP) IEEE 802.3ad, Static aggregation.
VLAN	Supports up to 4K VLANs simultaneously (out of 4096 VLAN IDs), Port-based VLAN, 802.1Q tag-based VLAN
IGMP v1/v2 Snooping	IGMP limits bandwidth-intensive multicast traffic to only the requesters.

Layer 3 Switching Specifications

DHCP Server	Assign IP to DHCP clients
-------------	---------------------------

Technical Specification

Security

IEEE 802.1x	IEEE802.1X: RADIUS authentication, authorization and accounting, MD5 hash, guest VLAN, single/multiple host mode and single/multiple sessions, Supports IGMP-RADIUS based 802.1X, Dynamic VLAN assignment
Port Security	Locks MAC addresses to ports, and limits the number of learned MAC address
Storm Control	Prevents traffic on a LAN from being disrupted by a broadcast, multicast, or unicast storm on a port
Loop Protection	To prevent unknown unicast, broadcast and multicast loops in Layer 2 switching configurations.
RADIUS/ TACACS+	Supports RADIUS and TACACS+ authentication. Switch as a client

QoS

Classification	Port based, 802.1p VLAN priority based
Bandwidth Control	Ingress policer, Egress shaping and rate control, Per port

Management software

Port Mirroring	Traffic on a port can be mirrored to another port for analysis with a network analyzer or RMON probe. Up to N-1 (N is Switch's Ports) ports can be mirrored to single destination port. A single session is supported.
IEEE 802.1ab (LLDP)	Used by network devices for advertising their identities, capabilities, and neighbors on an IEEE 802ab local area network, Support LLDP-MED extensions
Web GUI Interface	Built-in switch configuration utility for browser-based device configuration
SNMP	SNMP version1, 2c, 3
Flow Control	The IEEE 802.3x standard for monitoring high speed switched networks. It gives complete visibility into the use of networks enabling performance optimization, accounting/billing for usage, and defense against security threats
Firmware Upgrade	Web browser upgrade HTTP and TFTP
NTP	Network Time Protocol (NTP) is a networking protocol for clock synchronization between computer systems over packet-switched
Other Management	System, HTTP, DHCP Client, Cable Diagnostics, Syslog, IPV4/IPV6 Management, SSH, Telnet

Networking Specifications

Total Gigabit Ports	12
Gigabit PoE Ports (10M/100M/1G)	8 x 30W PoE
SFP Slots (100M/1G)	4
Gigabit Ports (RJ45)	-
Forwarding Capacity	17.856Mpps
Mac Table	8k
Jumbo Frames	9,216 Bytes
Switching Capacity	24 Gbps

Power Specifications

Input Voltage	100VAC ~ 240VAC 280VAC 4hr 300VAC 1min.
Backup Power Input Voltage	48VDC ~ 56VDC
Output Voltage Range / per PoE Port	54 VDC PoE IEEE 802.3af (Max. 15.4W) output PoE+ IEEE802.3at (Max. 30W) output
PSE Power Pin Assignment	12(-),36(+)
Switch power consumption (without PoE)	10W
PoE Power Budget	240W
Surge Protection / each PoE Port	6KV
Surge Protection for AC Power	40KV

Technical Specification

Mechanical Specifications

Dimensions (L x W x H)	315.4 x 245.8 x 118mm
Weight	4.37KG
Connectors	M16 x 4, M25 x 2
DI/DO	1/1
Console	RJ45
Reset Button	Yes

Environmental Specifications

Weather Rating	IP67
Vandal Proof	IK10
Operating Temperature	-40°C~ 65°C
Storage Temperature	-40°C~ 85°C
Operating Humidity	5% ~ 95% non-condensing

Certifications

EMC	CE, FCC, VCCI, C-Tick Class A
Safety	EN62368-1
Surge	EN61000-4-5